

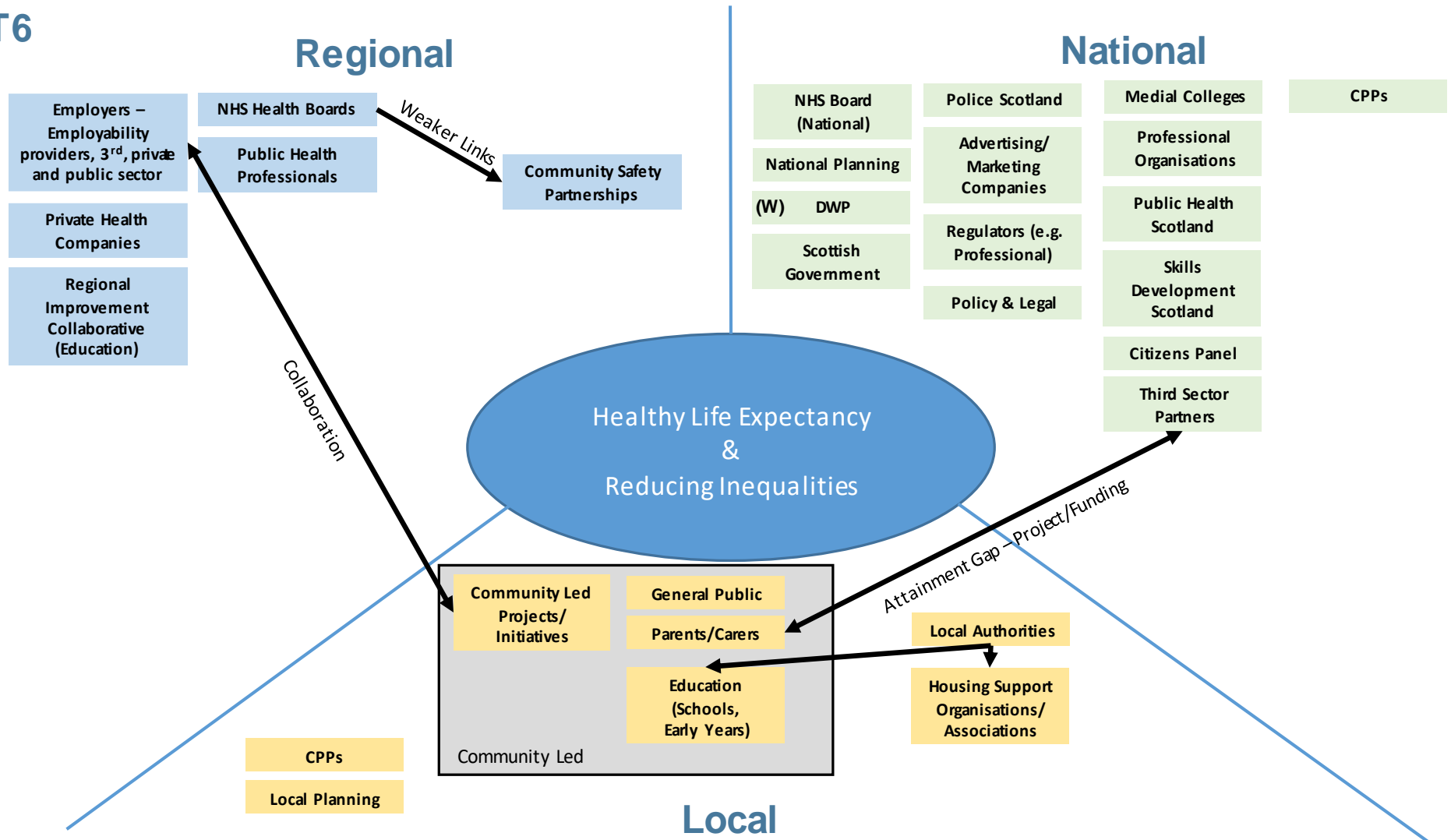
PHR: Enabling the Whole System Event
Thursday 24th January 2019

Table/Group: 6

Session 1: Creating the conditions for Whole System Working

Key: strong (S), moderate (M), weak (W) or no engagement (N)

T6



Session 2: Developing the Plan
Put the “Public” in Public Health

	Who	What	How	When	Where
Communication	<p><u>Unity of voice</u> across many agencies</p> <p>Community & Individuals at the centre.</p>	Get out from behind screens	<p>Making better <u>personal connections</u>: Make <u>face to face</u> contact.</p> <p>But how to <u>incentivise</u> connections? -Funding requirements -e.g. Aspiring Communities Fund (ESF)</p> <p>Data & Intelligence (knowledge into action chain is an issue)</p>	Connections at <u>all</u> levels of the organisation (not just seniors)	
Leadership	<p>COIPS/Locality Plans</p> <p>CPPs</p>	<p>Community Empowerment</p> <p>Fairer Scotland</p>			
Structures		<p><u>Natural Communities</u> - Interests as well as geographies</p> <p>Important to think about <u>how</u> what we do impacts others on wellbeing e.g. schools.</p>	<p>System navigation for individuals</p> <p>Identification of practical challenges which people can work on as a priority.</p>		
Culture and Values	Better understanding/measurement of the <u>quality of relationships</u> than an organisation has outside its own “walls”	Identify + build on good practice examples of working with private sector.	Logic modelling – to map out what we want to achieve and how we plan to get there.		
Workforce	Community Development and advice/input from others feeding into deliberation/dialogue	Institutional asset-rich wealth of relevant skills.	<p>Workforce getting opportunities to empathise and understand public they serve.</p> <p>Facilitate cross-fertilisation between different sectors through secondments, exchange.</p>		
Relationships	<p>DELIBERATIVE ENGAGEMENT</p> <p>Build alliance with orgs. Addressing inequalities in education, employability, justice etc. on shared drivers (not just public health challenges)</p>	<p>Embed Trauma – Informed practice</p> <p>Importance of building & sustaining relationships. Articulating why this is important.</p>	<p>How to make engagement wide and open??</p> <p>Importance of networking people at different levels of system – invest time to create relationships.</p>		
Evidence		‘Experts’ helping people address <u>their problems</u>	Not through track routes.		