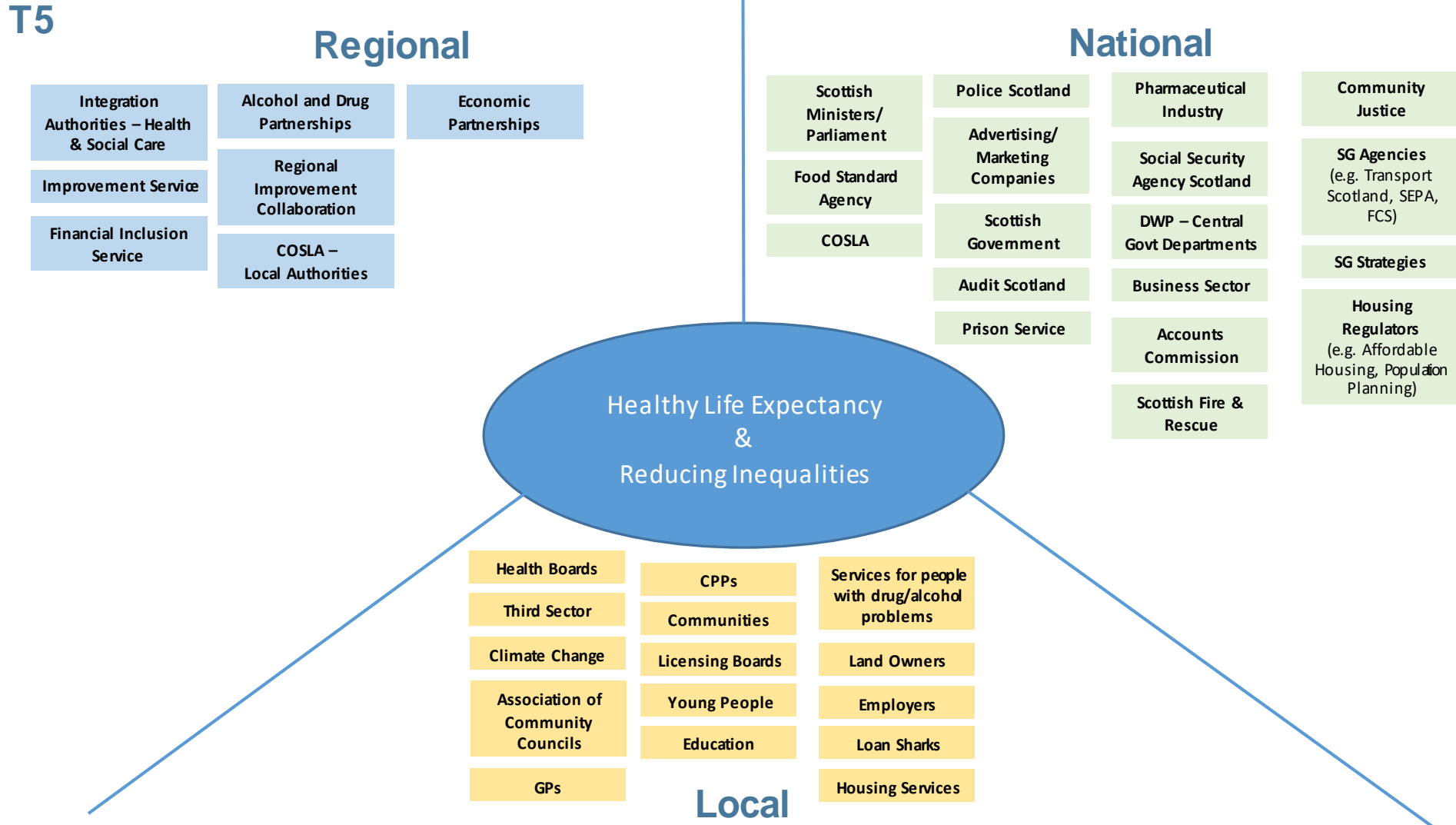


PHR: Enabling the Whole System Event
Thursday 24th January 2019

Table/Group: 5

Session 1: Creating the conditions for Whole System Working

Key: strong (S), moderate (M), weak (W) or no engagement (N)



Whole System Definition Comments;

- Use of language – important to improve understand of what it means in practice, especially “flexibility”
- Importance of stressing “integrated” approach which will be crucial
- How all different partners, which are part of the complex structure, come together as a network
- Need to develop networks to ensure they’re inclusive
- Focus on what makes the difference – not about changing the complicated structures
- Making it real that encourages local community involvement (inclusive)
- Encouraging a change in mindset and also support a culture change – Important in the context of informing rules and responsibilities of different players in the system
- Clear vision on where we want to be by 2020
- How do we play a part in supporting local areas/regions to get on board with the public health agenda, especially given different priorities and experiences of what works
- Also, onus of change not just at local but also the NHS
- Need to factor in different geography of Scotland (remote and rural aspects)

Group 5 worked alongside another table to complete session 2 – no outputs available.