

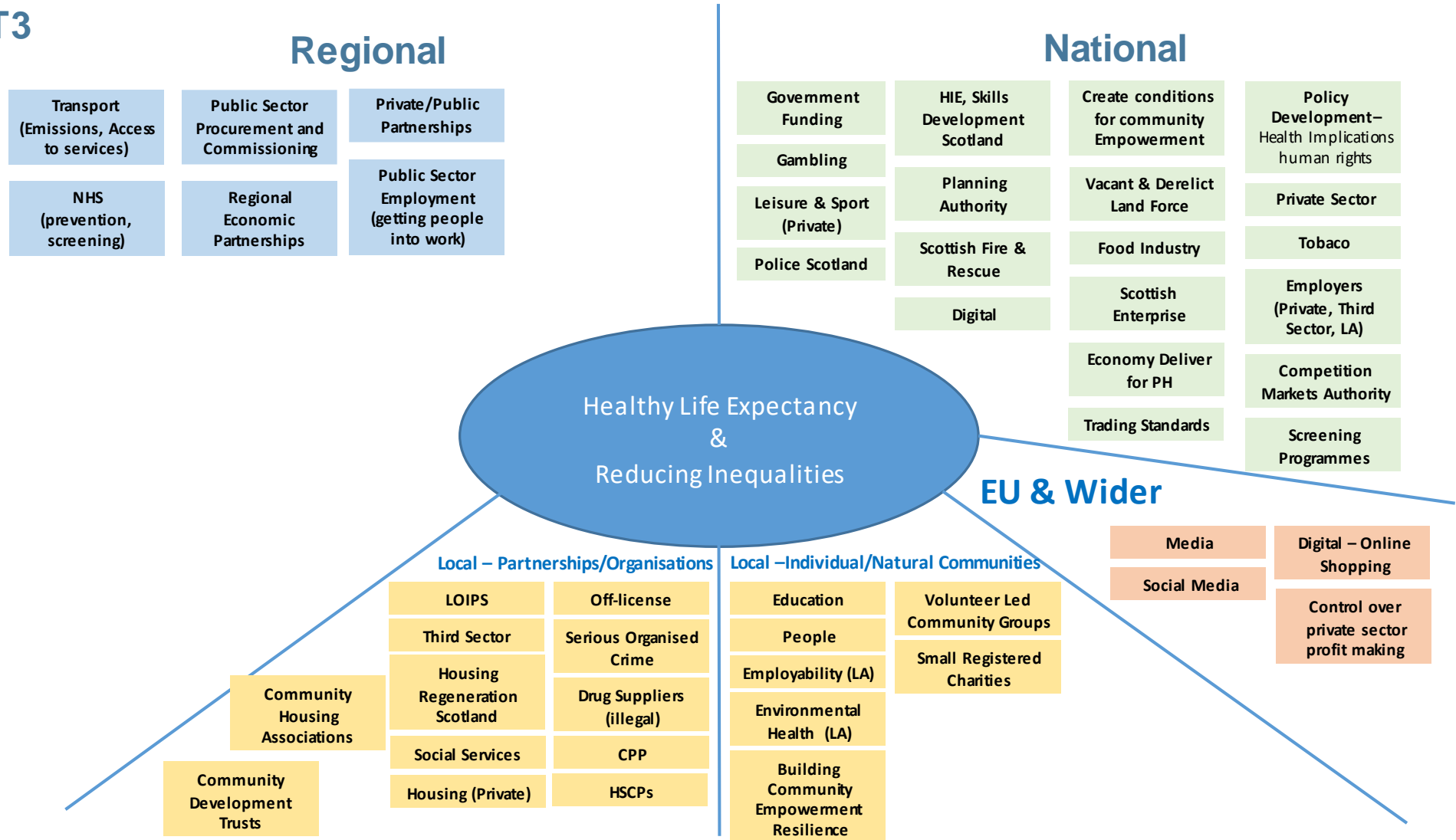
PHR: Enabling the Whole System Event
Thursday 24th January 2019

Table/Group: 3

Session 1: Creating the conditions for Whole System Working

Key: strong (S), moderate (M), weak (W) or no engagement (N)

T3



Session 2: Developing the Plan ENSURE WE MONITOR AND MEASURE WHAT MATTERS TO OUR COMMUNITIES

	Who	What	How	When	Where
Communication	<p>CPPs</p> <p>Community</p> <p>Empowering Communities</p>	<p>Report in Silos</p> <p>Measure what is important</p> <p>Encourage community to provide measures/data</p> <p>Learning from where it works well.</p>	<p>Whole system approach to reporting – review.</p> <p>Connect system to share this information. People share what matters to them.</p>		
Leadership	<p>Public Sector</p> <p>Communities – People</p> <p>Third Sector/ Private Sector</p> <p>Local/National Governance</p>	<p>Collective conversations & planning – access to data.</p> <p>Challenge indicators.</p> <p>Don't want 32 PH plans collectively</p>	<p>Community engagement to report issues.</p> <p>Build on work ongoing</p> <p>Listen to communities</p> <p>Act faster on what matters to communities</p> <p>Leaders in system work collectively</p>		
Structures	<p>LOIPS – Locality Plans – Target monitor on this basis for public sector.</p> <p>Enable communities so public sector can concentrate on other areas.</p>	<p>Cap on number of measures review what is being measured and decide on important ones.</p>	<p>Conditions are being created of where we measure PH outcomes – we can build on this.</p>		
Culture and Values	<p>Communities – speak to and find out why the value their communities.</p>	<p>Need to be able to share what matters to them – be engaged</p> <p>Give ownership to communities by making decision, listen.</p> <p>Shared values and shared cultures</p>	<p>Look at where people interact with system.</p>		
Workforce	<p>Public Sector</p> <p>Communities</p>	<p>Build capacity locally to provide and analyse data</p> <p>Work with communities to provide information</p>			
Relationships	<p>Community</p> <p>People not engaged with communities</p>	<p>Where we engage with people – better connect information to improve outcomes</p> <p>Ensure we are making connections</p>			

	Who	What	How	When	Where
Governance & Accountability	<p>Mutual accountability</p> <p>Build on National Performance Framework (NPF)</p> <p>Devolve accountability + planning</p> <p>Local + national governance</p>	<p>Let go of established accountability lines – buy in from partners and ministers.</p> <p>Review how we are measuring NPF being accountable for something</p> <p>You don't have control of needs to be understanding in whole system of what we are measuring.</p>	<p>Collective discuss & agreement – Ministerial oversight and legislation.</p>		
Data	<p>Analyst + statisticians</p> <p>ISD/NSS</p> <p>Public Sector</p> <p>Private Sector</p> <p>Data + Intelligence Commission</p> <p>Research + Innovation Committee</p>	<p>Everyone has access to the right information in real time.</p> <p>Ensure capacity to collect data.</p> <p>Ensure it doesn't just focus on professional health view but takes account of what matters.</p>			